

Lock the lower clip until it stops



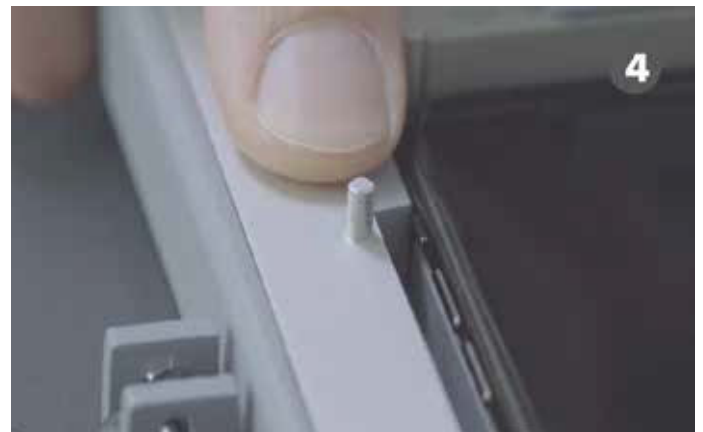
Enlarge the upper clip and hold it in position



Insert the smartphone without the case and release the upper clip



Position the mobile spacer based on the side buttons of the smartphone



Push the lower clip to lock and fix the smartphone in position



If the spacer of the smartphone is greater than the edges, lower the metal lever



Clean the screen with the microfibre cloth and with adhesive dust remover



Insert the glass in the appropriate guide-pins



Remove the lower film from the glass



Lower the glass onto the screen



USE THE ANTI-BUBBLE SPATULA, EXERTING PRESSURE FROM THE CENTRE TO THE EDGES (for smartphones with curved display exert pressure on the edges using the microfibre slip mat, fig. 11A)



Unlock the clips and take out the smartphone*



Remove the upper film*



*the final two steps can be inverted